



QUALITY FASTENERS™

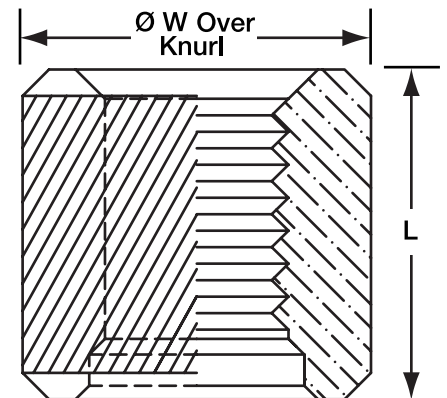


MSI SERIES - Permanent Threads in Plastic, Wood or Metal

MSI Inserts offer a permanent steel threaded solution that can be quickly installed into a wide range of materials. The exterior knurls provide a secure grip into pre-drilled holes withstanding torque and pull-out. Its smooth tapered lead assists to guide screws during insertion.

SMALL				
Thread Size	L	W	Hole Size	Part Number
4-40	0.19	0.202	0.166	MSI-204-CZ
5-40	0.25	0.264	0.228	MSI-205-CZ
6-32	0.25	0.264	0.228	MSI-206-CZ
8-32	0.25	0.264	0.228	MSI-208-CZ

LARGE				
Thread Size	L	W	Hole Size	Part Number
6-32	0.38	0.455	0.413	MSI-106-CZ
8-32	0.38	0.455	0.413	MSI-108-CZ
10-32	0.38	0.455	0.413	MSI-110-CZ
10-24	0.38	0.455	0.413	MSI-112-CZ
1/4-20	0.38	0.455	0.413	MSI-114-CZ
1/4-28	0.38	0.455	0.413	MSI-118-CZ
5/16-18	0.38	0.518	0.468	MSI-158-CZ
5/16-24	0.38	0.518	0.468	MSI-154-CZ
3/8-16	0.38	0.58	0.531	MSI-136-CZ



Tests should be performed to determine if hole size adjustment is necessary for varying materials and your specific application. (Higher density materials may require a slightly larger hole).

Installation Instructions

Standard Installation

1. Drill hole size to match depth of insert (see table)
2. Press or drive insert until flush with surface (counterbore facing up)

Counterbore Installation

1. Drill a thru-hole per noted hole size dimension in the chart above
2. Counterbore opposite side
3. Press or drive insert until flush with surface (counterbore end faces bottom of hole)

Material and Finish

Carbon Steel, Heat Treated, Zinc Plate.

Custom sizes, materials available.



Standard Products	Installation Styles				Replaces Southco®	Replaces PEM®
	Press-In	Flare-In	Floating	PC Board		
MC Series Retractable Captive Screws	MCP	MCF	MCL	MCB	47	PF11 PF12 PF13 PF14
MP Series Retractable Captive Screws	MPP	MPF	MPL	MPB	–	PF30 PF31 PF32 PF50 PF60
MM Series "Low Head" Miniature Retractable Screws	MMP	MMF	MML	MMB	52	PFS2 PFC2
MS Series "High Head" Miniature Retractable Screws	MSP	MSF	MSL	MSB	52	–
MF Series Flush Mount Captive Screws	√	–	–	–	F5	PF10
Spring Loaded Plungers	√	√	–	√	56	PTL2
MFL Product Series "Speed Lead" Captive Screws					09 12 17	–
SLS "Speed Latch" System					–	–
MTS Series "Snap-In" Captive Screws					–	–
Q Series Quarter-Turn Fasteners & Receptacles					81 82 85	–
MSI Series Threaded Inserts					71 72	–
BCS Series Knurled Captive Screws					58	–

®Southco is a registered trademark of Southco, Inc. PF11, PF12, PF13, PF14, PF30, PF31, PF32, PF50, PF60, PFC, PFC2 & ®PEM are trademarks of Penn Engineering & Manufacturing Corp.

Headquarters: Matdan Corporation Cincinnati, Ohio 45242, USA Tel: 513 - 794 - 0500 Fax: 513 - 794 - 0651 E-mail: sales@matdanfasteners.com	China Division: Matdan (Ningbo) Specialty Hardware Co., Ltd. Ningbo, Zhejiang Province, China 315120 E-mail: sales_cn@matdanfasteners.com
--	--

www.matdanfasteners.com

Matdan, matdanfasteners.com and the Matdan logo are trademarks of the Matdan Corporation. Use allowed only with written permission from Matdan. The contents of this publication are copyrighted 2007 Matdan Corporation. All rights reserved. Copies may be obtained from the company. Published specifications are subject to change without notice.

For ordering information call 513-794-0500 or E-mail: sales@matdanfasteners.com
 Published specifications are subject to change without notice. ©2007 Matdan Corporation. All rights reserved.